



Department of Fishery and Wildlife Biology

28-81-4 → Chase

Colorado State University  
Fort Collins, Colorado  
80523

January 15, 1981

Mr. Mike Edrington  
District Ranger  
Red Feather Lakes Ranger District  
1600 N. College  
Fort Collins, CO 80524

Dear Mike:

I am writing to keep you posted of progress we are making on our study of Boreal Owls in the Cameron Pass Area. Probably John Bustos has told you of some of our activities.

Starting last April when Bill Shuster and I located a calling male near the Joe Wright Reservoir parking area, my students and I have made several trips to the area plotting in locations of calling males, making tape recordings, and looking for nests. December 29, 1980 we found a roadkilled Boreal Owl along Colorado 14 in the State Forest. Since then we have put out 20 nestboxes of the type used by Boreal Owls in Alaska, Canada and Europe. Enclosed is a map showing locations of the boxes. All are placed about 15 feet up in living trees. Dave Palmer, a senior in wildlife biology, will be checking on the nestboxes and censusing owls this spring.

Please give us whatever official permission is required to continue these studies being conducted in cooperation with the Colorado Division of Wildlife.

Sincerely yours,

*Ronald A. Ryder*

Ronald A. Ryder  
Professor of Wildlife Biology

RAR:pt

cc: John Bustos  
Jerry Craig  
Ted Washington

\* We also picked up a road-killed Pygmy Owl 2 Jan '81 on Colo. 14, 1 mi. w. of Stovely Prairie Rd.

Will probably get taxidermy mt.



Advanced  
copy to  
Chase

DISTRIBUTION AND STATUS OF THE BOREAL OWL  
IN WESTERN NORTH AMERICA L

Ronald A. Ryder and David A. Palmer, Department of Fishery and  
Wildlife Biology, Colorado State University, Fort Collins, CO 80523

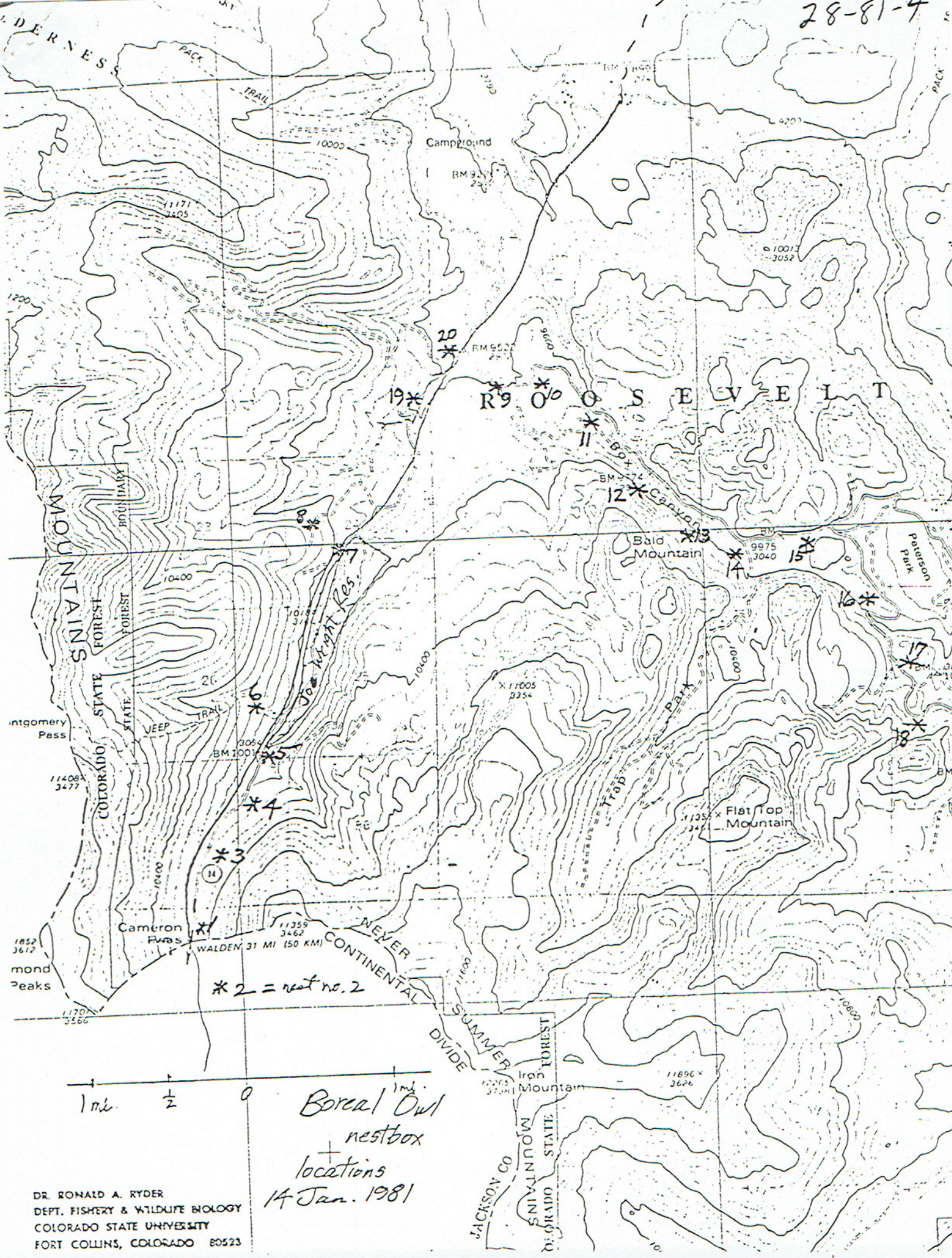
The Boreal Owl (Aegolius funereus) is usually considered to nest only at high latitudes in Canada and Alaska but recent findings strongly suggest that there are resident, breeding populations in U.S. Rocky Mountains. A nest <sup>x</sup> has been followed in northern Colorado in 1981 and a possible nest reported for Idaho. Adults feeding young were observed in Pullman, Washington, and there are summer records of Boreal Owls for Wyoming and Montana. A review of the literature and known specimens indicates the species has regularly nested as far south as southern Colorado, mainly in higher elevation spruce-fir forests. Densities of calling males per km<sup>2</sup> calculated for Larimer County, Colorado, in 1980 and 1981, compare favorably with better known populations in Alaska and Canada.

1 Abstract of paper to be presented 27 June 1981 at a joint meeting of the Western Field Ornithologists and the Colorado Field Ornithologists in Estes Park, Colorado.

\* Dave hasn't been back since 17 May '98 when I had at least 1 egg (he had to feel under her, she wouldn't leave the cavity!!)



28-81-4



DR. RONALD A. RYDER  
DEPT. FISHERY & WILDLIFE BIOLOGY  
COLORADO STATE UNIVERSITY  
FORT COLLINS, COLORADO 80523